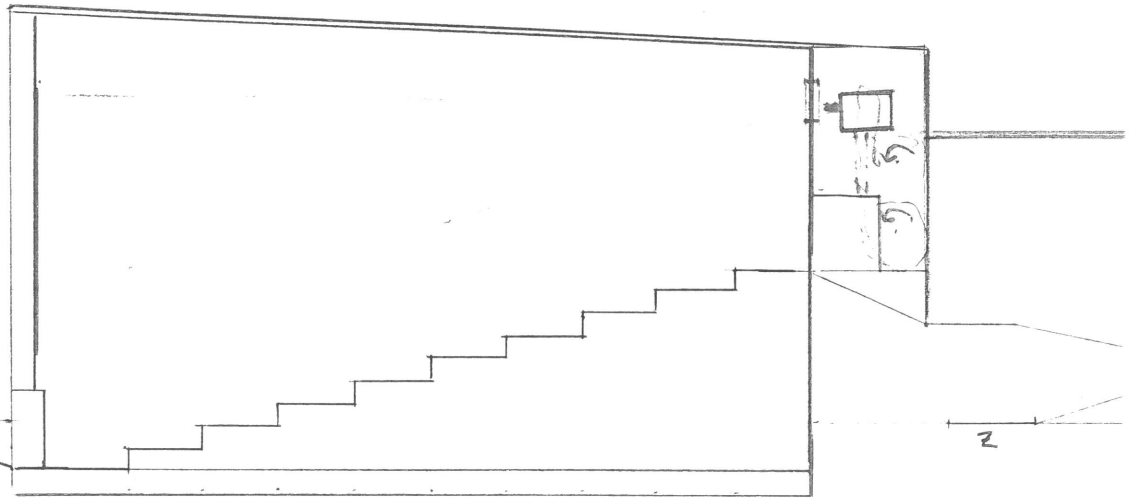


CS ≈ 3,5 × 8,0
VS 1,6: 3,5 × 5,8
WS 1,85: 3,5 × 6,5



BIO L
NY SR
SIDES!

VD

9,5

CA. 125 PL.

- 1
- 2
- 3
- 4
- 5
- 6
- 7
- 8
- 9
- 10
- 11
- OP 12

15,3

IND	2,2	
	OPR	1,20

VD
2